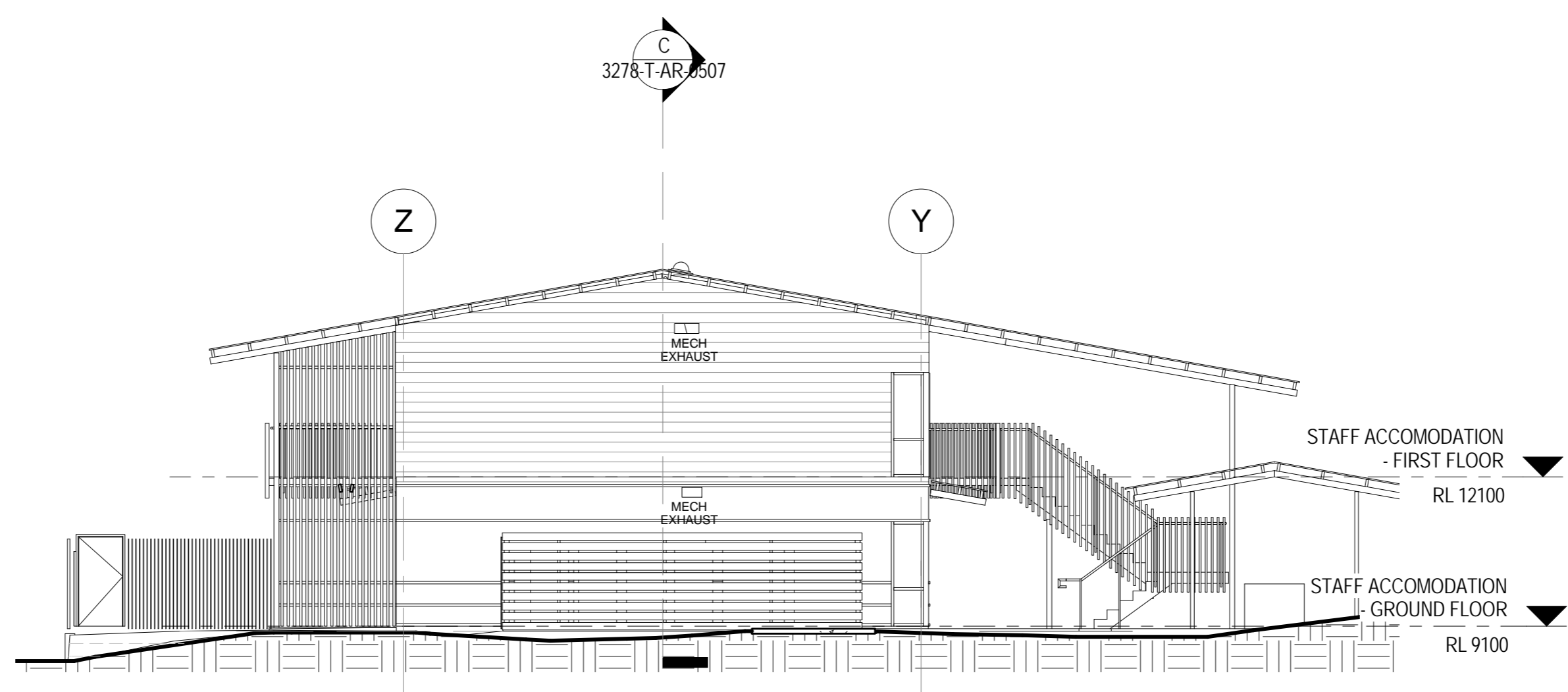
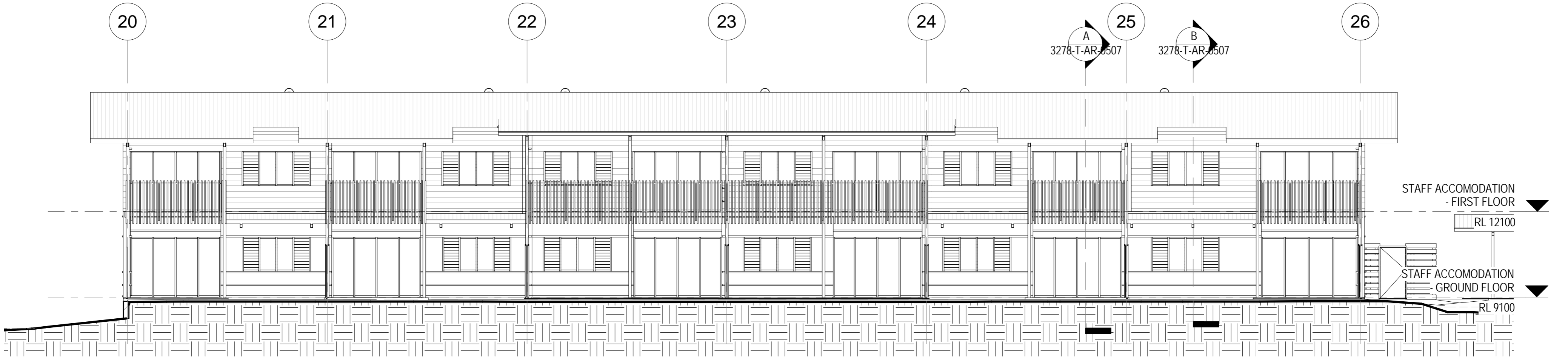


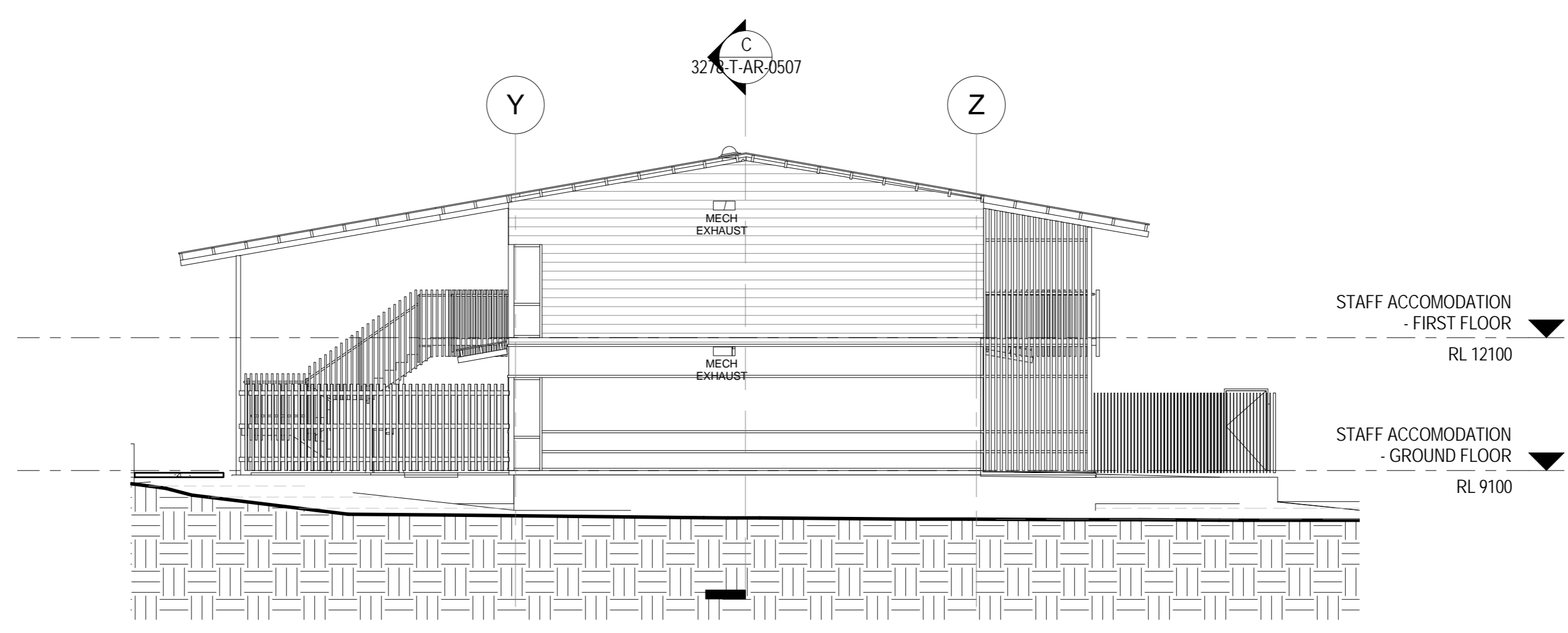
STAFF ACCOMODATION - NORTH ELEVATION  
1 : 100



STAFF ACCOMODATION - EAST ELEVATION  
1 : 100



STAFF ACCOMODATION - SOUTH ELEVATION  
1 : 100



STAFF ACCOMODATION - WEST ELEVATION  
1 : 100

SJ STEEL SHEET JOIN  
REFER DETAIL 6 ON DWG 0605  
REFER SPEC

SETOUT OF HORIZONTAL FC WALL TRIM  
TO BE PROVIDED AT CONSTRUCTION

**TENDER ISSUE - NOT FOR CONSTRUCTION**

0 10 20 50 100 200

FISHER BUTTROSE ARCHITECTS PTY LTD  
ABN 078 745 856  
P 07 4031 1707 F 07 4041 5881  
LEVEL 1, 115 GRAFTON STREET  
4807 PO BOX 5107  
CAIRNS QUEENSLAND AUSTRALIA  
www.fisherbttrose.com.au

AMENDMENTS

ISSUE	DATE	DESCRIPTION	INT
1	16-02-2011	TENDER ISSUE	BK



WESTERN CAPE  
RESIDENTIAL CAMPUS  
TAMARIND ROAD, WEIPA  
INDIGENOUS LAND CORPORATION

STAFF ACCOMMODATION  
- ELEVATIONS  
SCALE AT A1 1 : 100

APPROVED MB DRAWN BK PROJECT No. 1008  
DRAWING No. 3278-T-AR-0406 ISSUE 1  
16/02/2011 12:28:59 PM