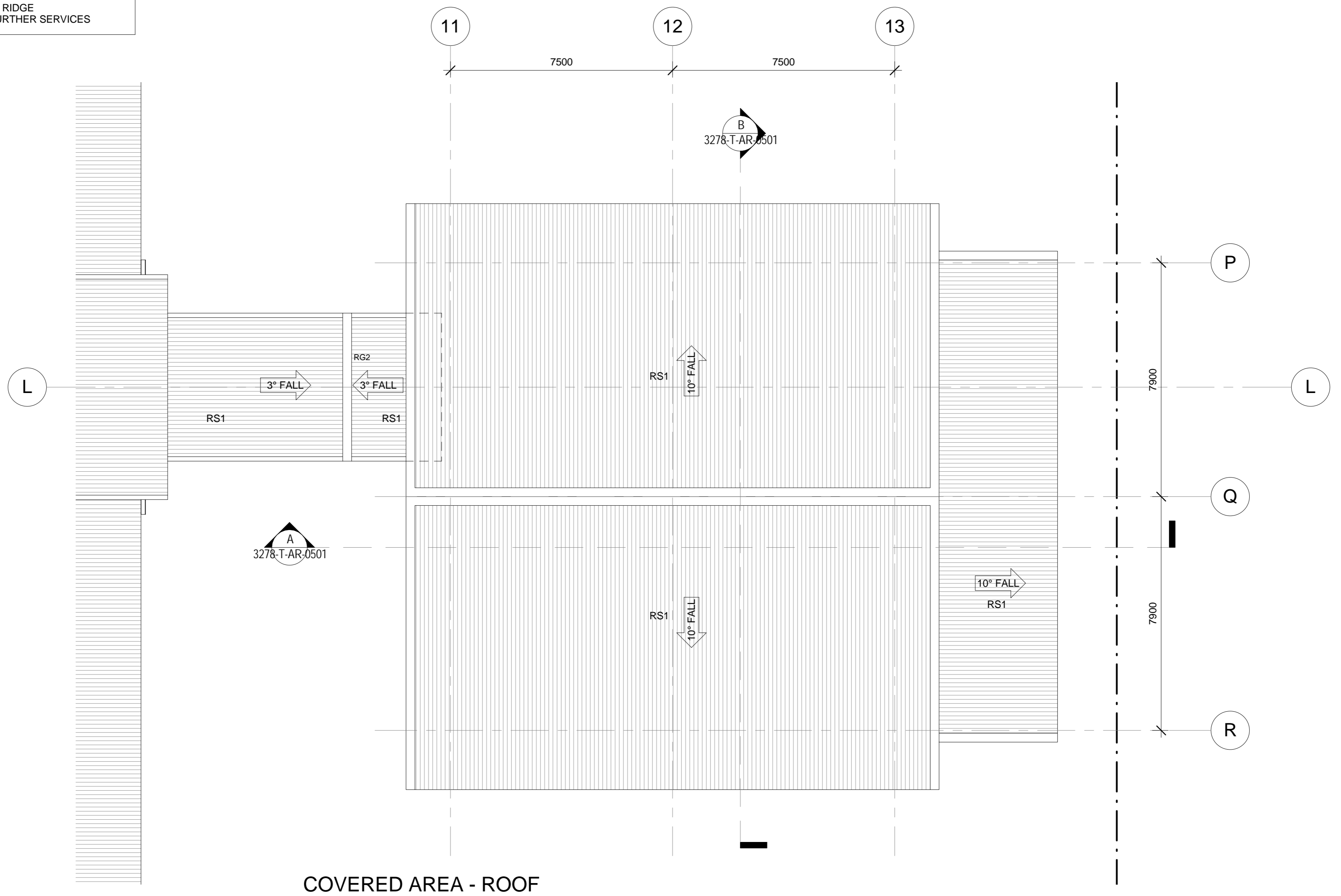


REFER DRAWINGS 0902 FOR WALL ELEVATIONS

- NOTE:
- FALL ARREST SYSTEM
PROVIDE DESIGN PROPOSAL FOR ARCHITECTS APPROVAL
LOCATE IN LEAST VISUALLY CONSPICUOUS LOCATIONS
 - FLASH ROOF PENETRATIONS TO RIDGE
REFER MECH DRAWINGS FOR FURTHER SERVICES

COVERED AREA - GROUND FLOOR

1:100



COVERED AREA - ROOF

1:100

TENDER ISSUE - NOT FOR CONSTRUCTION

FISHER BUTTROSE ARCHITECTS PTY LTD
ABN 078 745 856
P 07 4031 1707 F 07 4041 5881
LEVEL 1, 116 GRAFTON STREET
4807 PO BOX 5107
CAIRNS QUEENSLAND AUSTRALIA
www.fisherbttrose.com.au

AMENDMENTS

ISSUE	DATE	DESCRIPTION	INT
1	16-02-2011	TENDER ISSUE	BK



WESTERN CAPE
RESIDENTIAL CAMPUS
TAMARIND ROAD, WEIPA
INDIGENOUS LAND CORPORATION

COVERED AREA - FLOOR & ROOF PLANS

SCALE AT A1 1:100

APPROVED MB DRAWN BK PROJECT No. 1008

DRAWING No. 3278-T-AR-0210 ISSUE 1

16/02/2011 12:19:19 PM