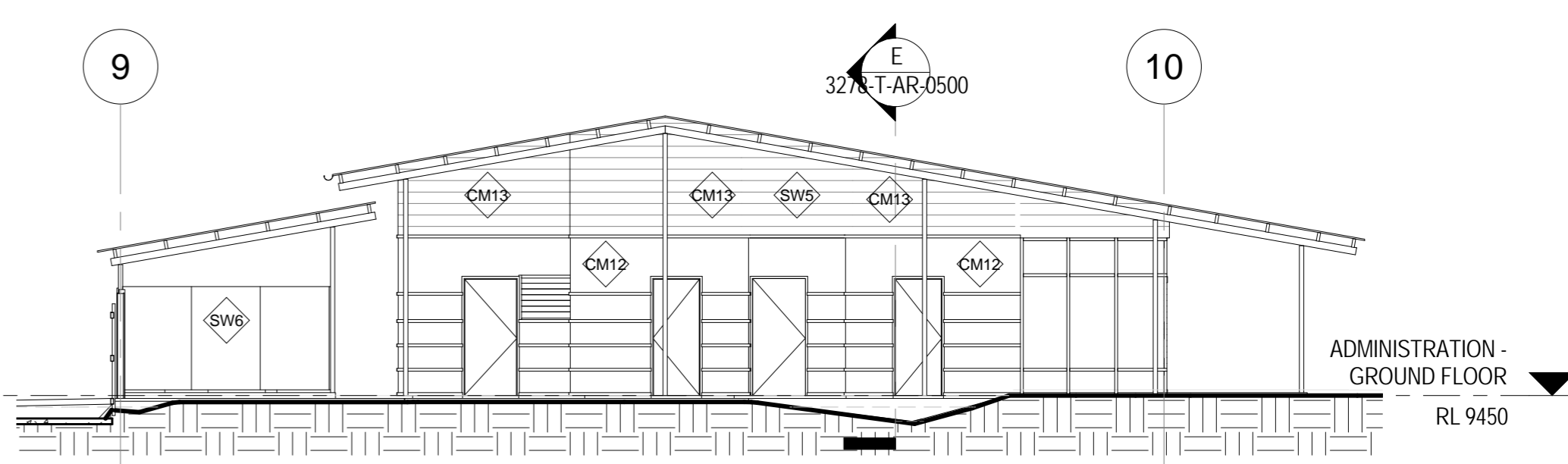


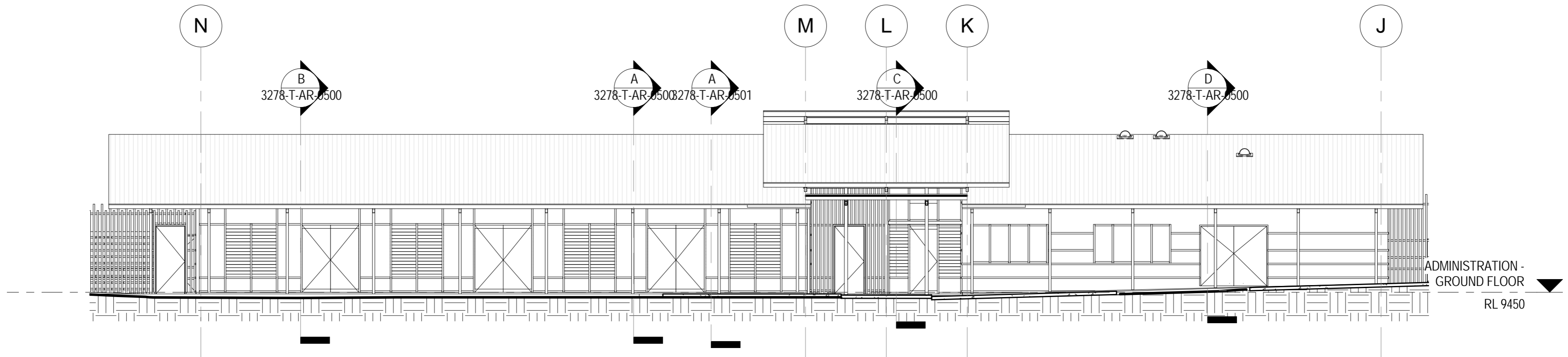
ADMINISTRATION - NORTH ELEVATION

1 : 100



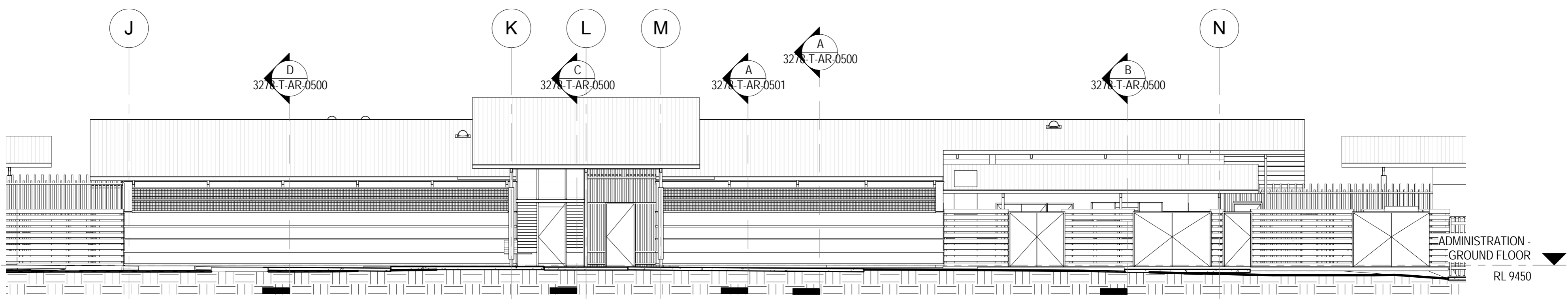
ADMINISTRATION - SOUTH ELEVATION

1 : 100



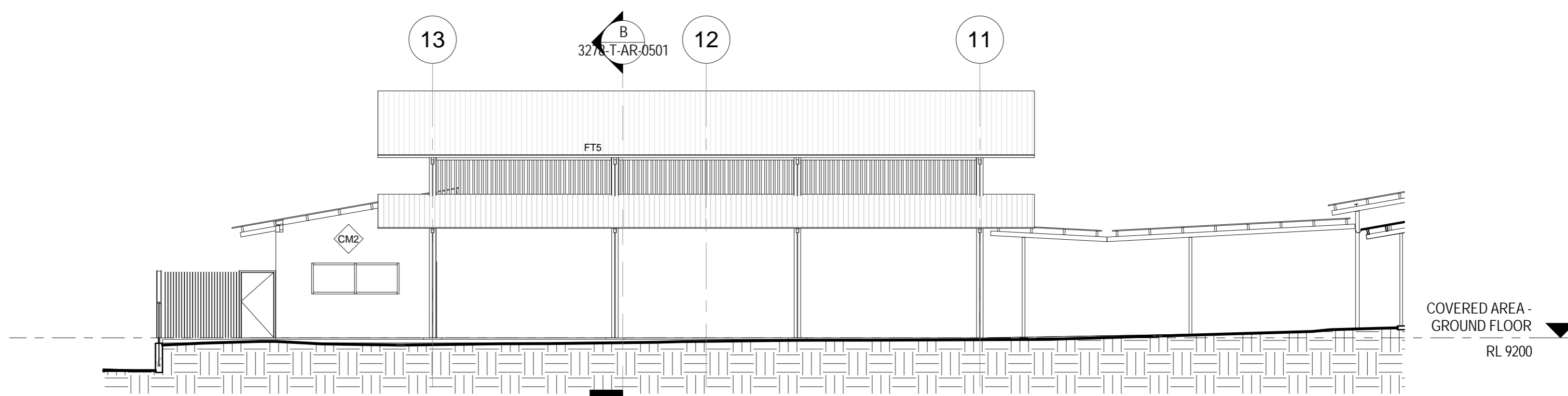
ADMINISTRATION - EAST ELEVATION

1 : 100



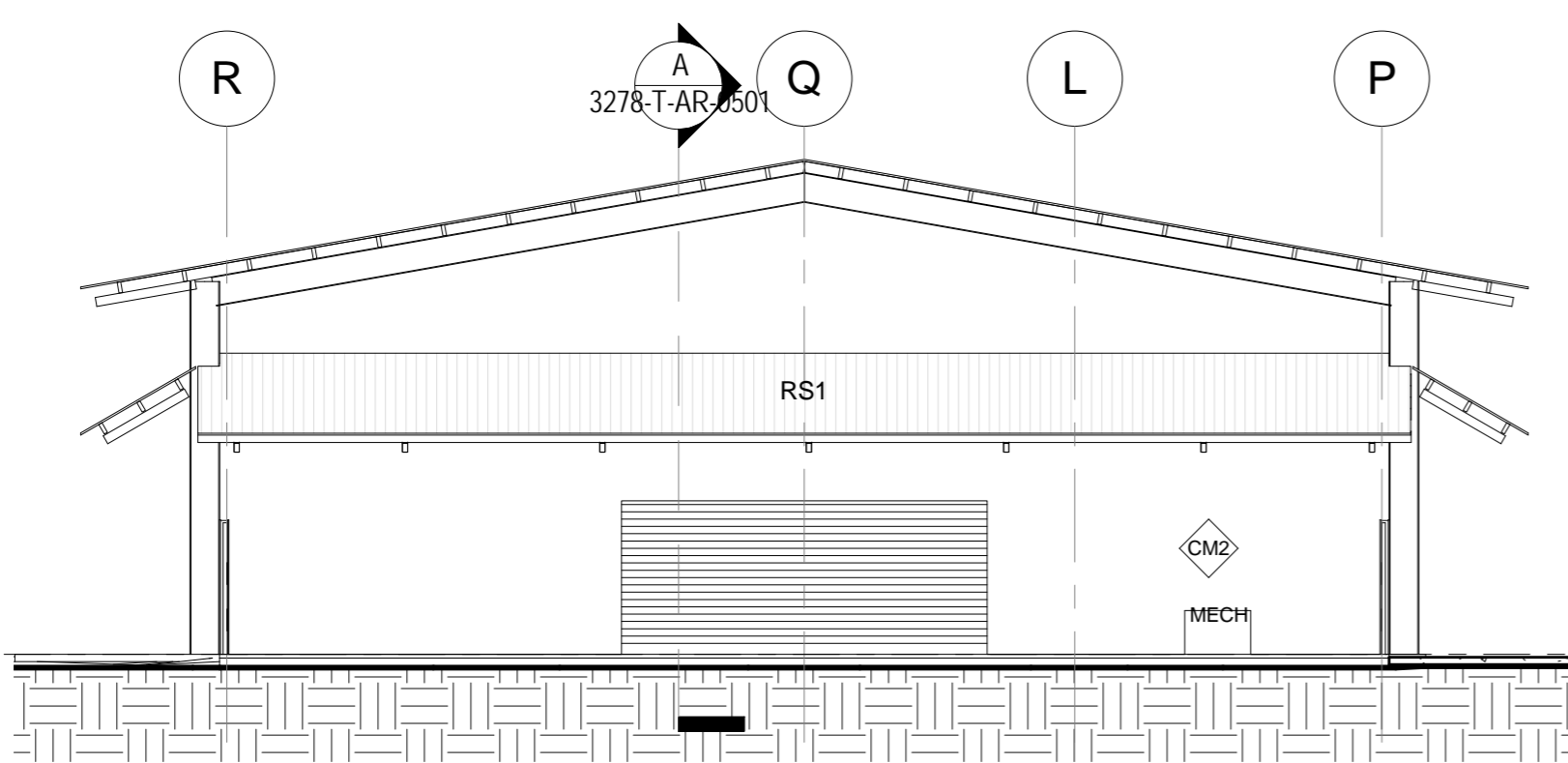
ADMINISTRATION - WEST ELEVATION

1 : 100



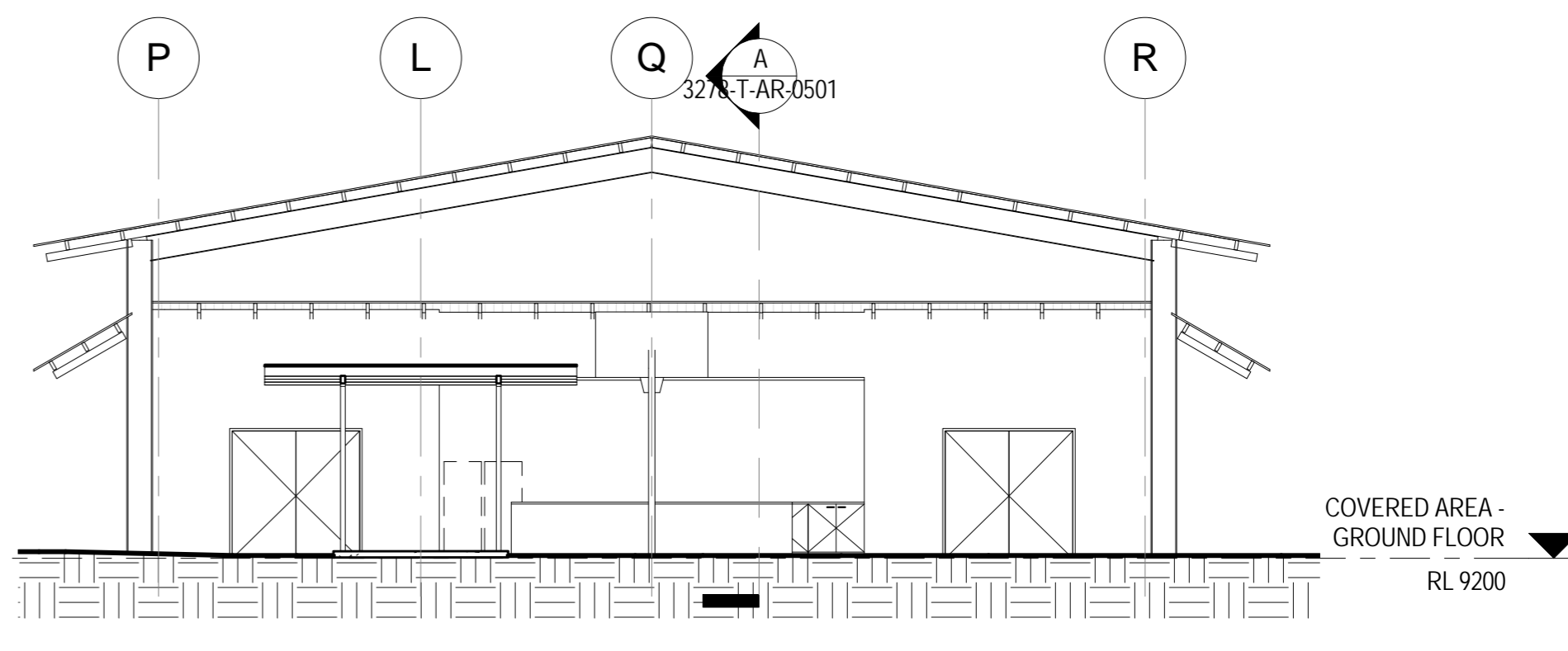
COVERED AREA - NORTH ELEVATION

1 : 100



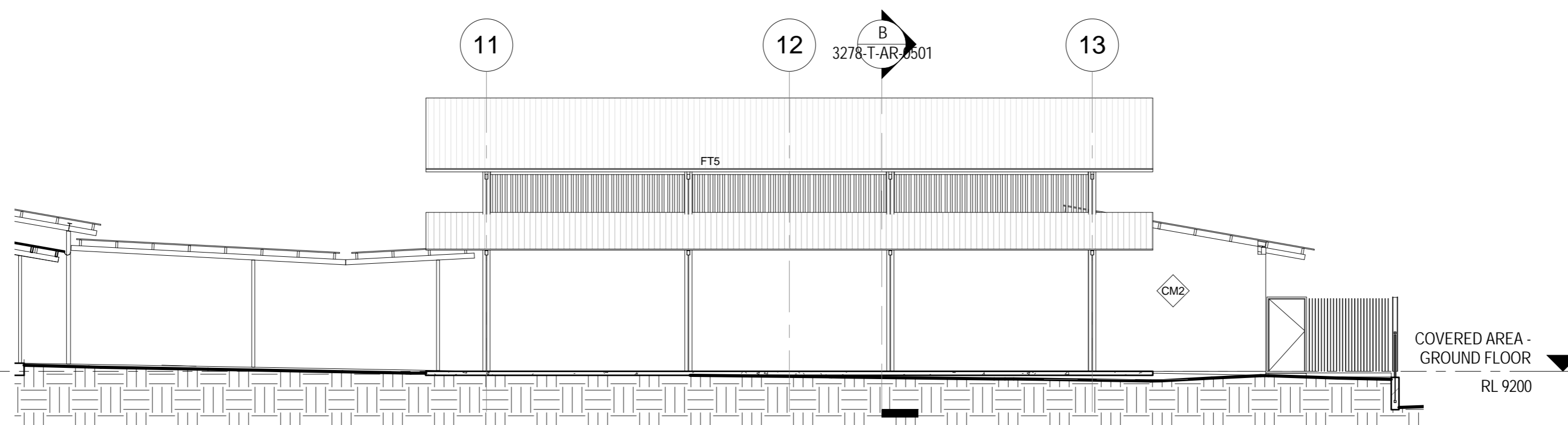
COVERED AREA - EAST ELEVATION

1 : 100



COVERED AREA - WEST ELEVATION

1 : 100



COVERED AREA - SOUTH ELEVATION

1 : 100

SETOUT OF HORIZONTAL FC WALL TRIM TO BE PROVIDED AT CONSTRUCTION

SJ STEEL SHEET JOIN REFER DETAIL 6 ON DWG 0605 REFER SPEC

**TENDER ISSUE - NOT FOR CONSTRUCTION**

FISHER BUTTROSE ARCHITECTS PTY LTD  
ABN 078 745 856  
P 07 4031 1707 F 07 4041 5881  
LEVEL 1, 116 GRAFTON STREET  
4807 PO BOX 5107  
CAIRNS QUEENSLAND AUSTRALIA  
www.fisherbttrose.com.au

AMENDMENTS

ISSUE	DATE	DESCRIPTION	INT
1	16-02-2011	TENDER ISSUE	BK

**fisher  
architects  
buttrose**

WESTERN CAPE  
RESIDENTIAL CAMPUS  
TAMARIND ROAD, WEIPA  
INDIGENOUS LAND CORPORATION

ADMINISTRATION &  
COVERED AREA -  
ELEVATIONS  
SCALE AT A1 1 : 100

APPROVED MB DRAWN BK PROJECT No. 1008

DRAWING No. 3278-T-AR-0400 ISSUE 1

16/02/2011 12:30:07 PM